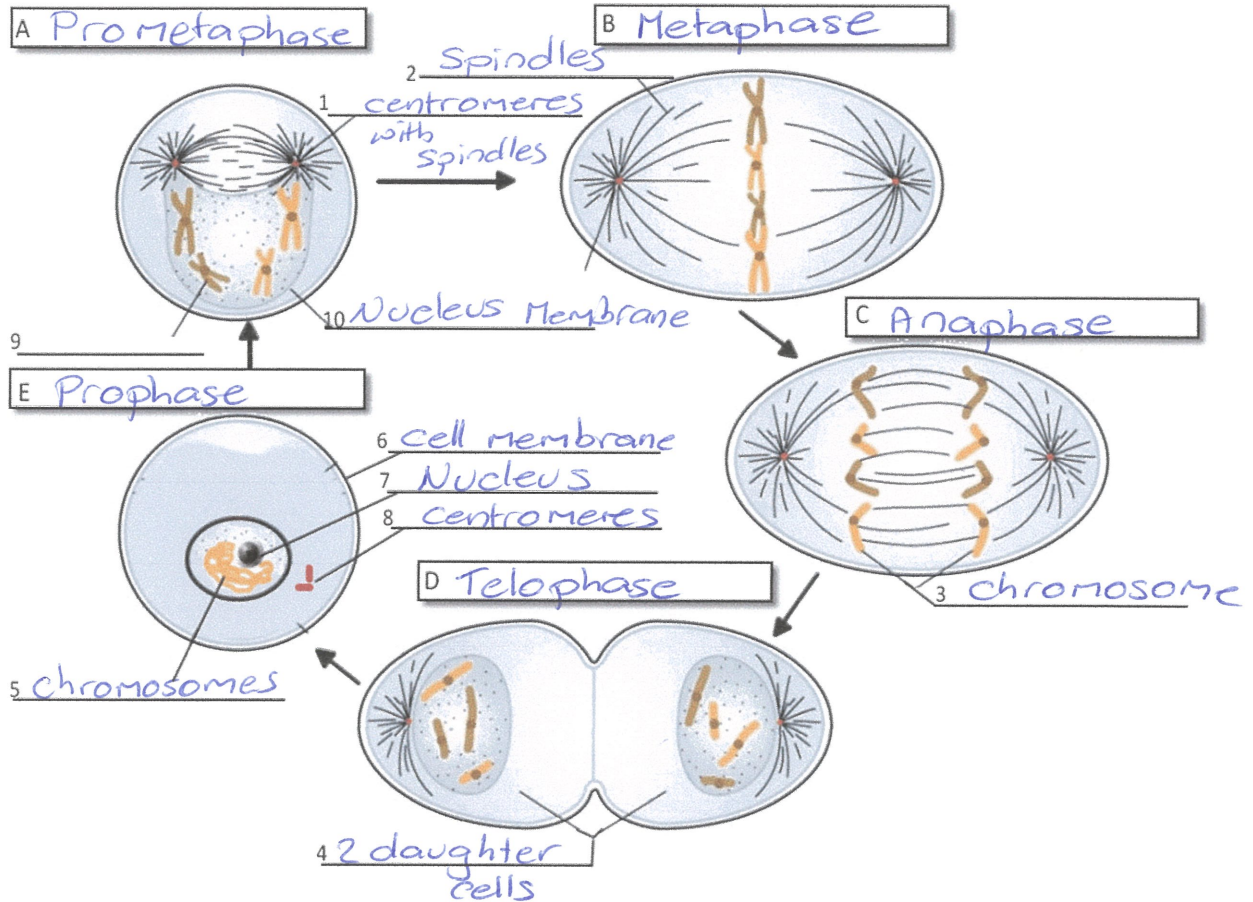


# Practice SAC

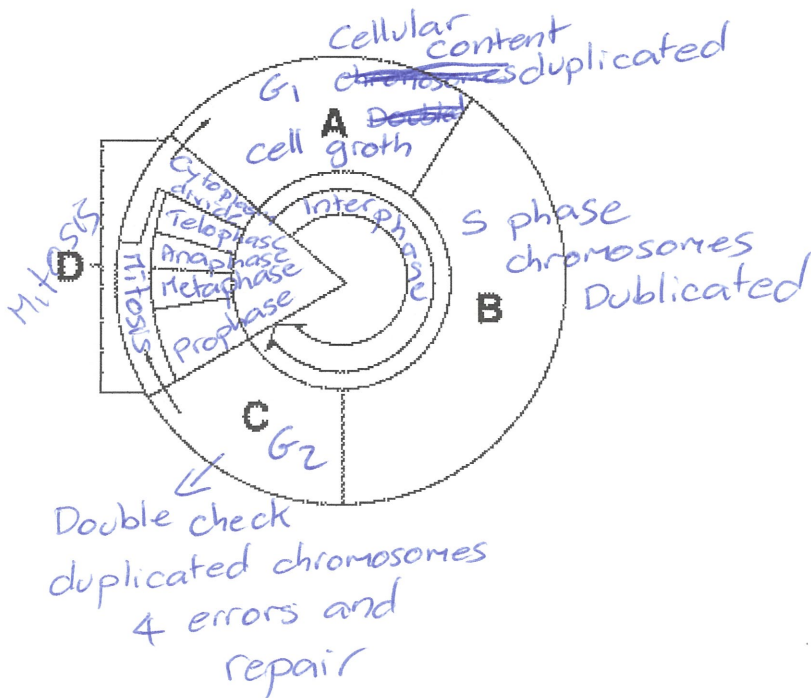
## Question 1

Explain what is occurring in each one of these diagrams



## Question 2

The diagram below shows a cell cycle, label the four phases labelled.



Question 3

a- Give two similarities between mitosis and meiosis

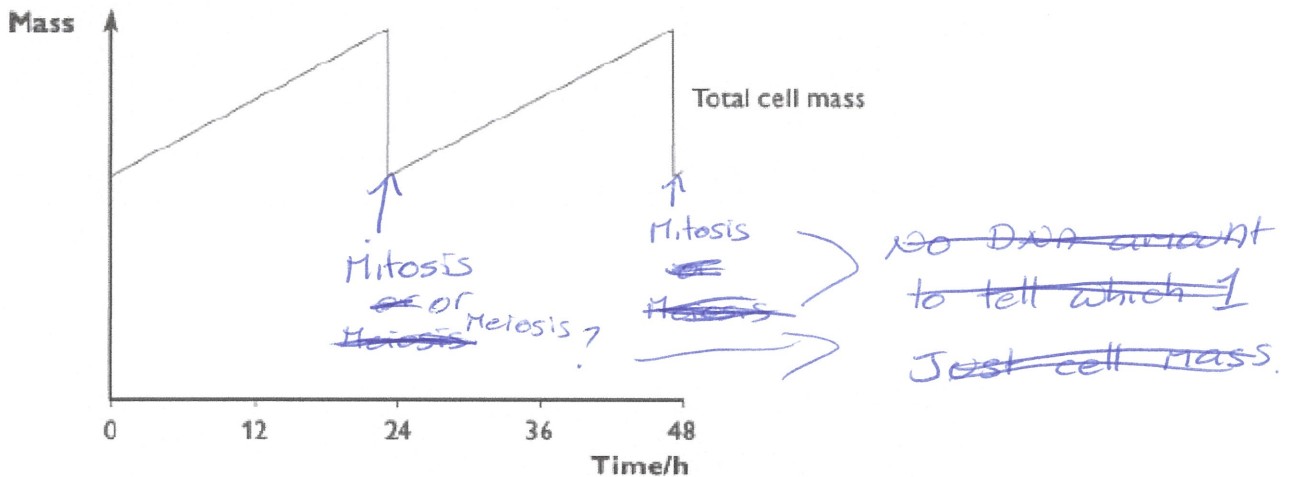
Way cell divides Both cell reproduction  
~~same number of chromosomes~~ Interphase stage - same  
 both have basic 5 phases Occurs in stages

b- Give me two differences between mitosis and meiosis

Mitosis - somatic cells	Meiosis - <sup>Germ cells</sup> sex cells
2 daughter cells	4 daughter cells
5 phases	9 phases
diploid daughter cells	haploid daughter cells

Question 4

Explain what this graph is showing.



cell doubles in mass then halves  
 and repeats the process.

Without DNA mass unable to say if  
 it is ~~Meiosis~~ Mitosis or Meiosis??

#### Question 4

Why do living things need mitosis to occur?

for cell growth and repair  
No new cells will be produced and  
so when a cell dies, it want be replaced.  
Also need more as we grow

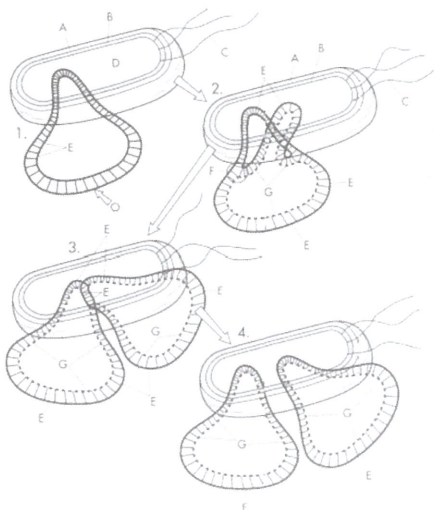
#### Question 5

What is a Gamete?

matere male or female germ cell  
Mature sex cell

#### Question 6 (ignore the letters and numbers)

What is this diagram showing you?



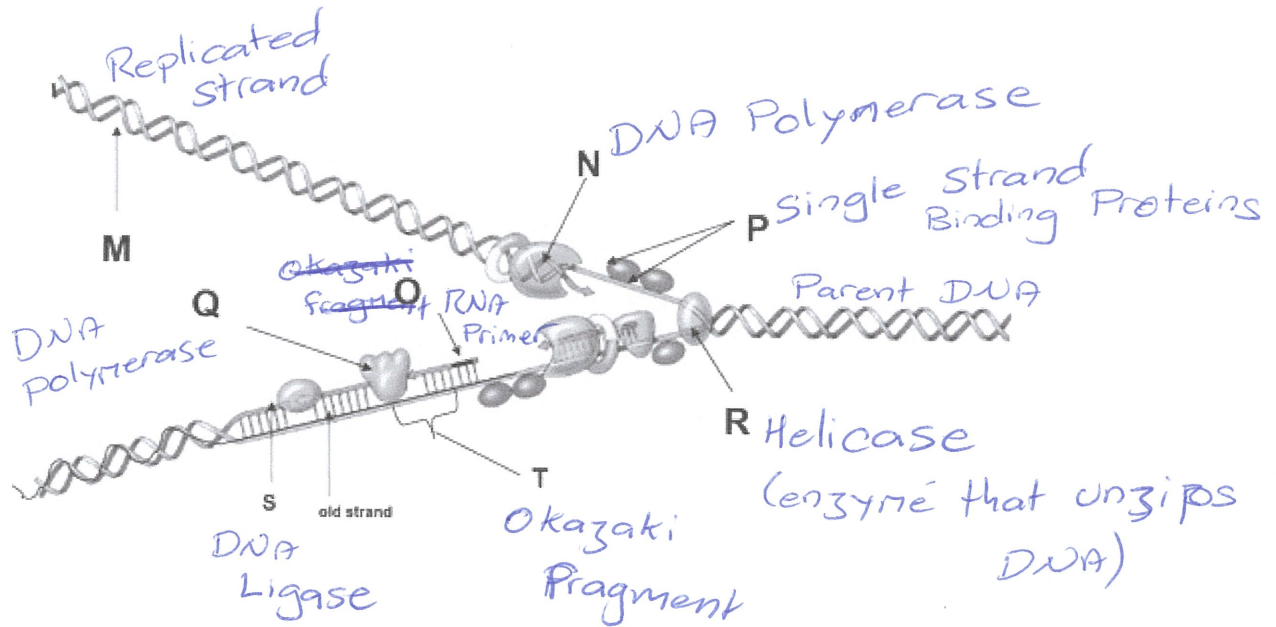
This is binary fission  
DNA - replicated to  
pass on to two daughter  
cells.

Where does this occur?

Prokaryotic cells

**Question 7**

Label the letters on the diagram below showing DNA replication.



**Question 8**

Create a flowchart that shows how DNA makes a protein

